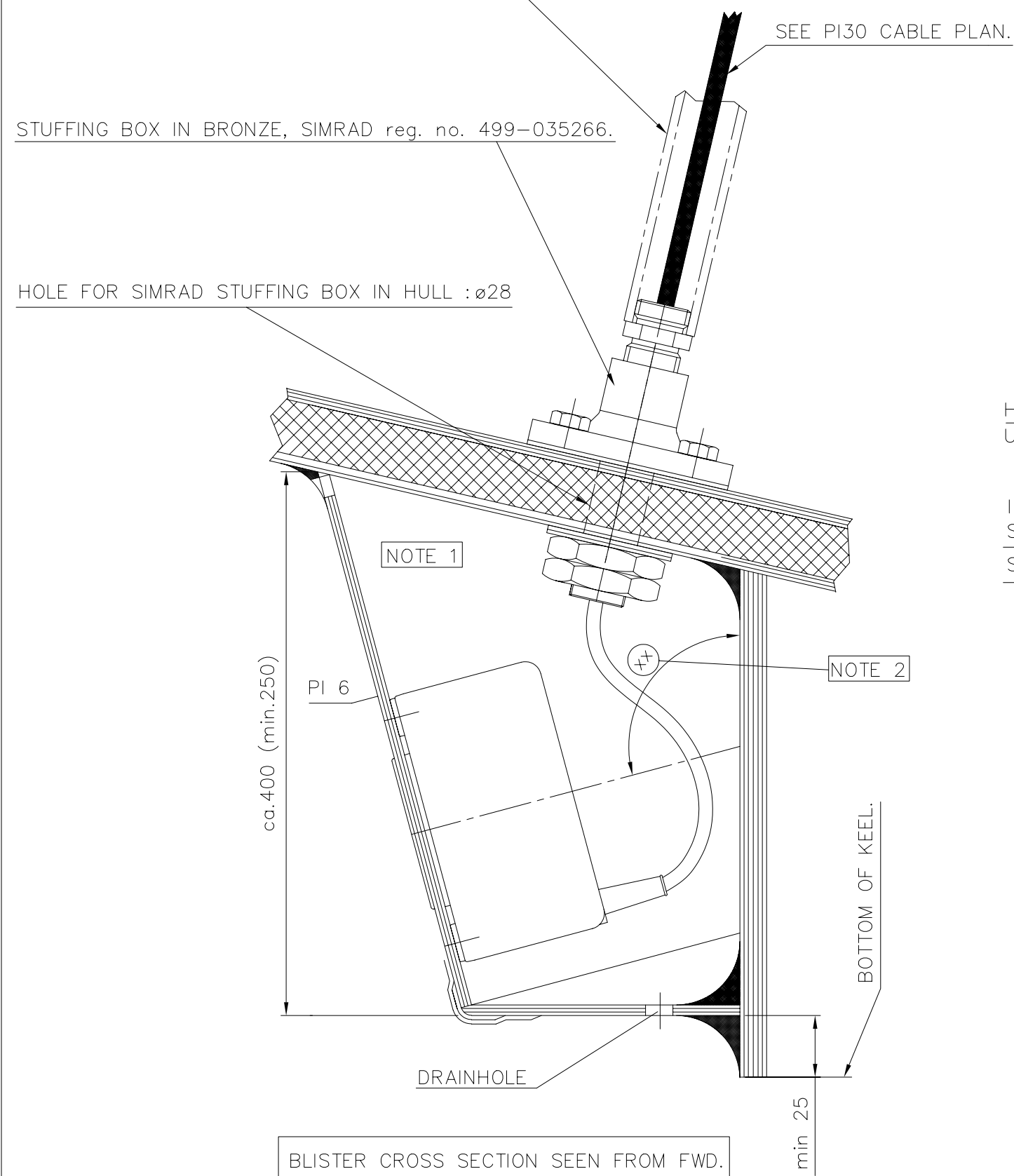


PLEASE REFER TO THE PI30 HYDROPHONE INSTALLATION MANUAL.

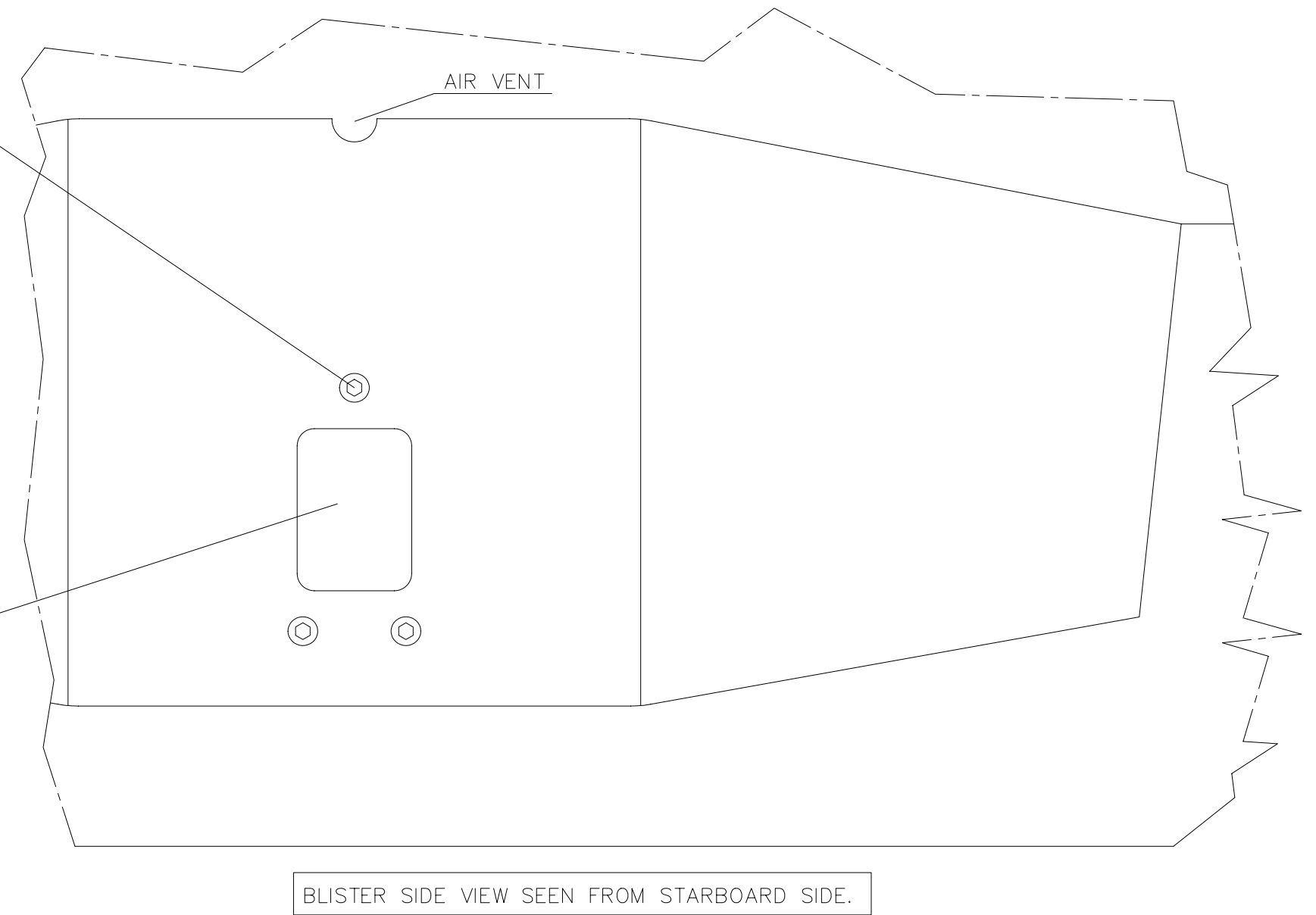
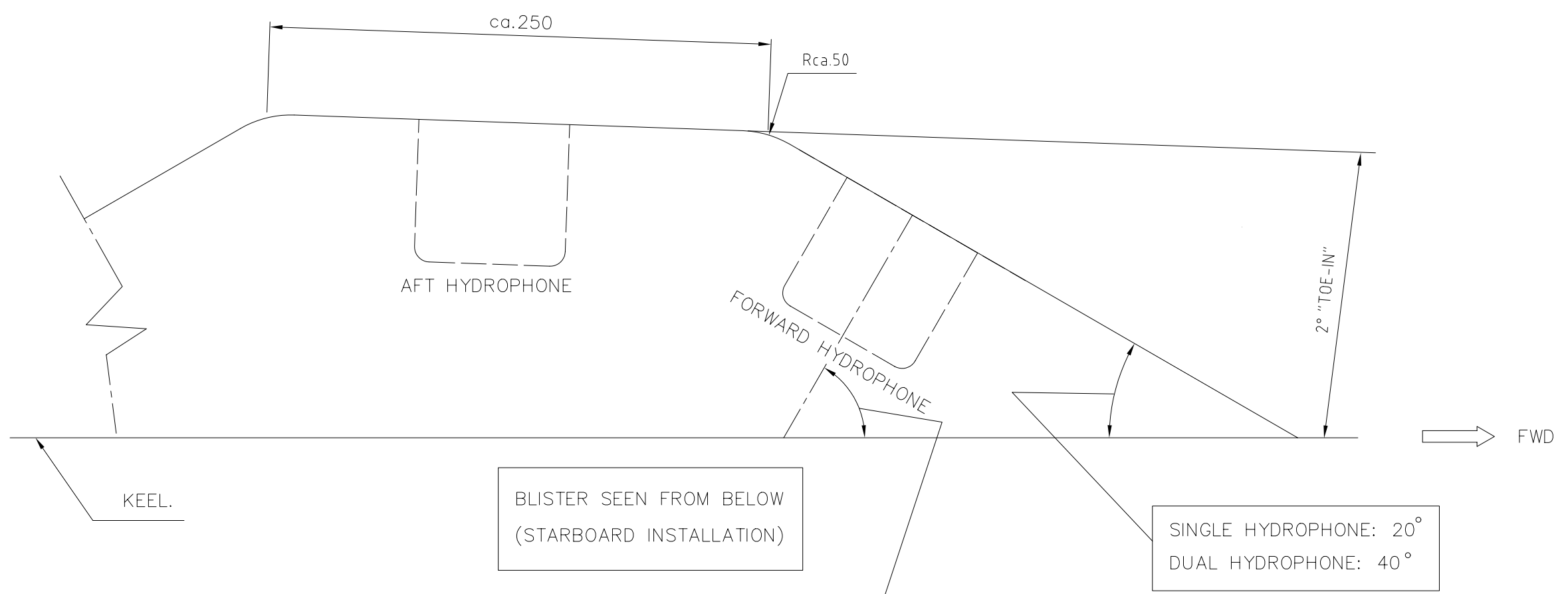
THE HYDROPHONE CABLE (6.5mm in diam. supplied in 25m length) IS TO BE PROTECTED WITH STEEL CONDUIT (1") IF REQUIRED.



HYDROPHONE MOUNTING ON 6 mm STEEL PLATE:
USE M8x35 SOCKET COUNTERSUNK HEAD SCREW

IMPORTANT!
STUD TORQUE: 5Nm.
SECURE THE THREADS WITH LOCTITE 270 OR EQUIVALENT

PURSE HYDROPHONE PI30 reg. no. 310-202275.
SEE DRAWING: 830-202893



NOTE 1: Install the hydrophone on the same side of the vessel which the Purse Seine is set. These installation instructions and related drawings are for vessels shooting and pursing to STARBOARD.

NB! NOTE 2: The beam angle of the hydrophone is 90° in the horizontal plane and 30° in the vertical plane. The recommended tilt angle ca. of 15°-25° is dependent on the application. Increase the tilt angle of the hydrophone as necessary to compensate for heel after shooting the purse seine.

THE BLISTER BUILT OF GUP PLATE IS TO BE CONSTRUCTED BY THE YARD.

REV./SIGN.	B	BOW								
DATE	05.06.03									
PROJ. METHOD										
SCALE	1:2.5									
DRAWN	99.11.26	bφj								
CHECKED	00.02.16	IS								
APPROVED	00.02.16	KRA								
UNLESS OTHERWISE STATED, TOLERANCE:			DIM.: ISO 2768-mK		THREAD: 6g/6H		PARTS LIST: N.A.		SIMRAD A KONGSBERG Company	
KEELMOUNTED HYDROPHONE			HULL OF SANDWICH OR WOOD		PURSE HYDRPHONE		PI30		SHEET OF 1 SH.SIZE: A2 REV.: B	
FILE NO.: CAD02			821-202912							