

Simrad ES120-7C

Split beam echo sounder transducer

Introduction

The Simrad ES120-7C is a 120 kHz split-beam composite transducer with a large bandwidth. This provides a fine range resolution, which is important for single fish detection and target strength measurements. The transducer has four quadrants.

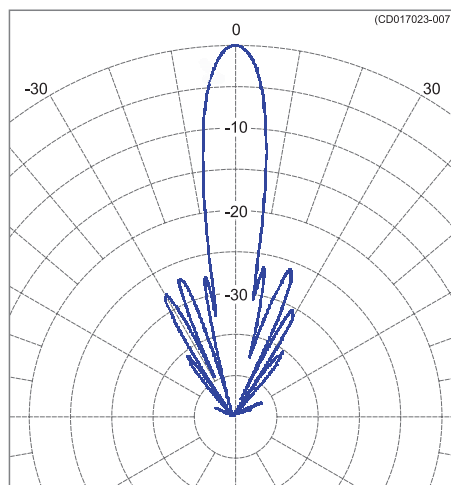
Order number

KSV-204580

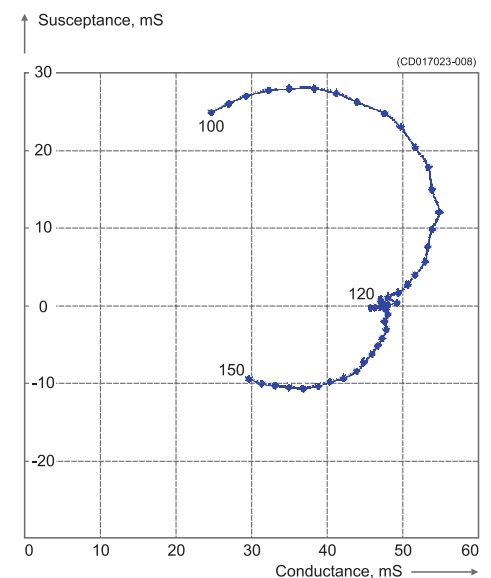
Technical specifications

The following specifications are valid when all four quadrants are wired in parallel.

- Resonant frequency: 120 kHz
- Circular beamwidth: 7 deg
- Directivity:
 - D: 650
 - DI = 10 log D: 28 dB
- Equivalent two-way beam angle:
 - Ψ : 0.009
 - 10 log Ψ : -21 dB
- Side lobes: Less than -23 dB
- Back radiation: Less than -40 dB
- Nominal impedance: 19 Ω
(Each quadrant: 75 Ω)
- Transmitting response: 185 dB re 1 μ Pa per V
- Receiving sensitivity, open circuit: -190 dB re 1V per μ Pa
- Electro-acoustic efficiency: 0.75
- Max. pulse power input: 1000 W
- Max. continuous input: 10 W
- Max. transducer depth: 20 m
- Cable length: 20 m
- Cable diameter: 10.6 mm
- Weight: 2.4 kg
- Storage temperature: -20° to 70°C

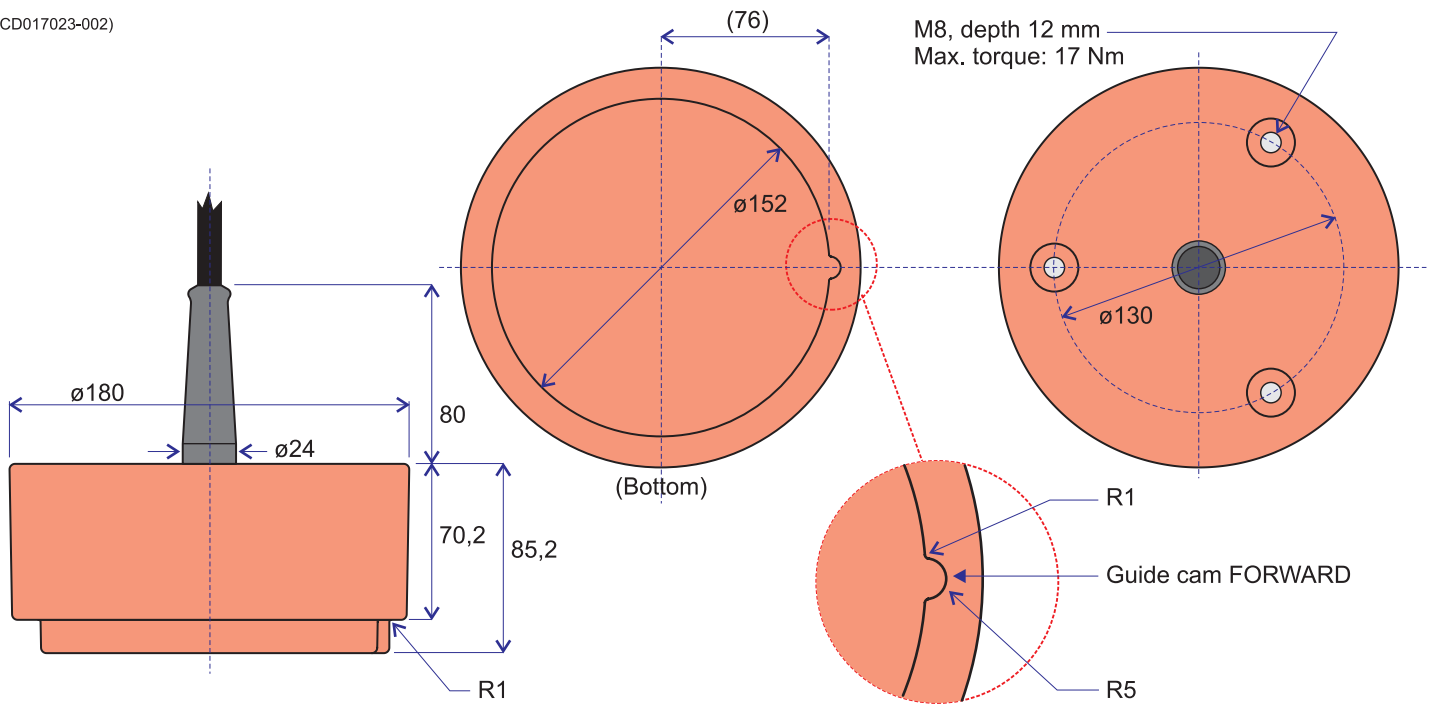


Beam pattern



Admittance

(CD017023-002)



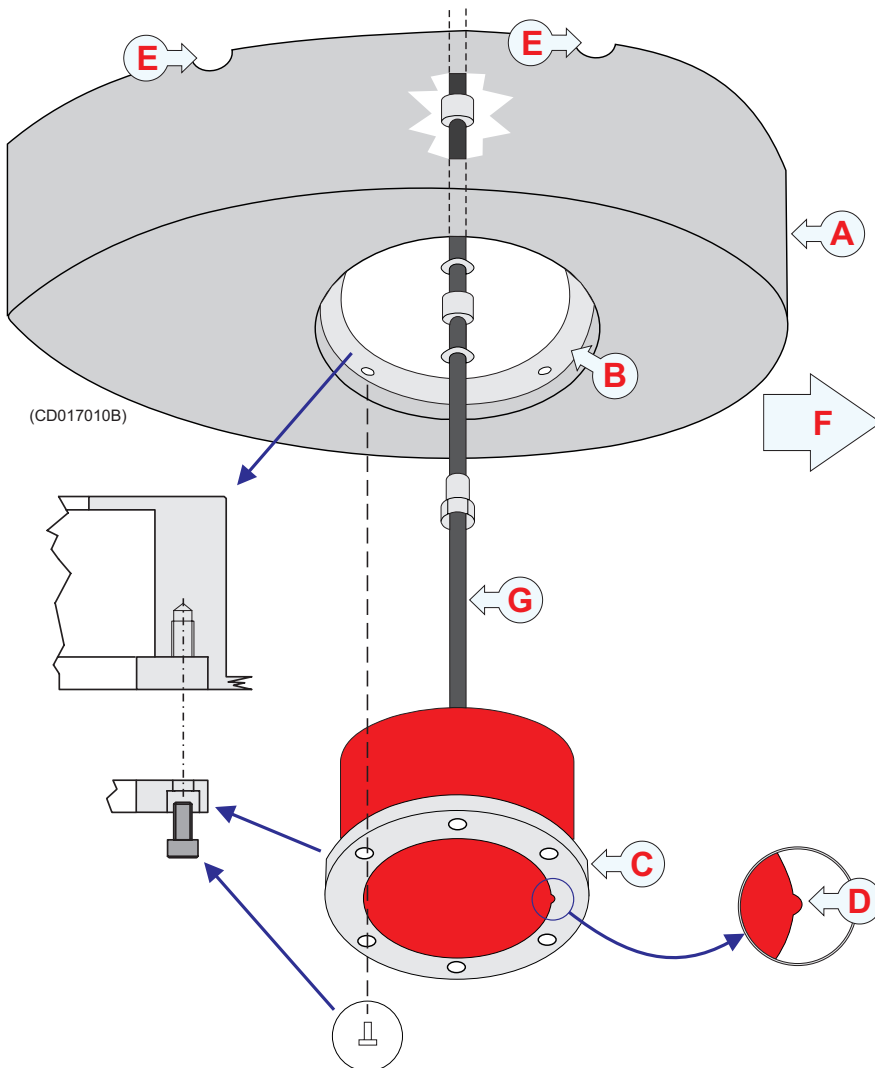
Outline dimensions

All dimensions in mm

Installation principle

- A Steel blister, must be manufactured by the shipyard
- B Mounting ring
- C Clamping ring
- D Guide to indicate "Forward"
- E Air outlet
- F Forward
- G Transducer cable

For more information regarding installation, refer to the *Simrad ES120-7C Installation manual*.



855-164381 / Rev.D / January 2009

Simrad

Kongsberg Maritime AS
 Strandpromenaden 50
 P.O.Box 111
 N-3191 Horten, Norway

Telephone: +47 33 03 40 00
 Telefax: +47 33 04 29 87
www.simrad.com
 simrad.sales@simrad.com

