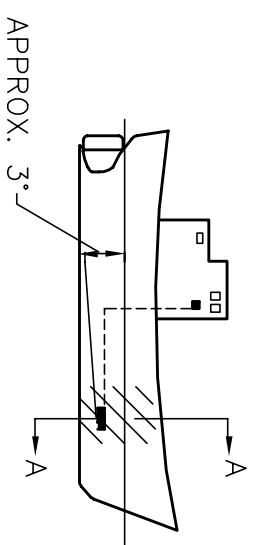
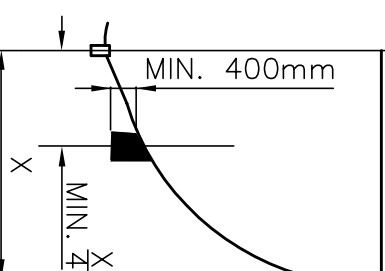


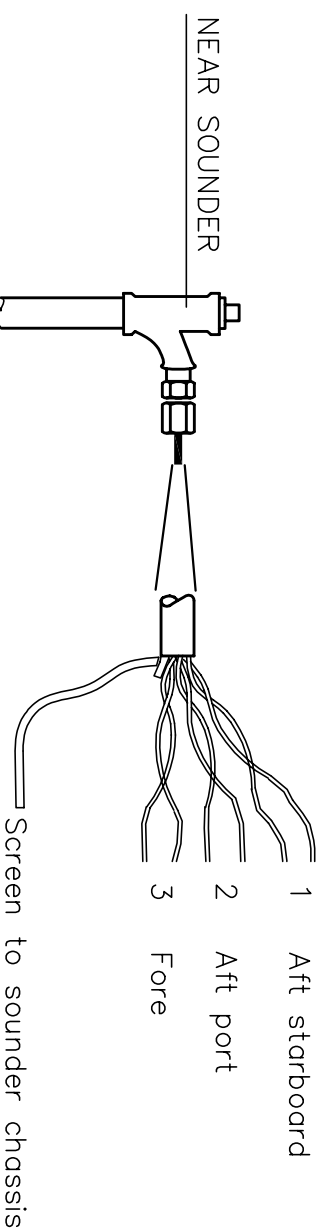
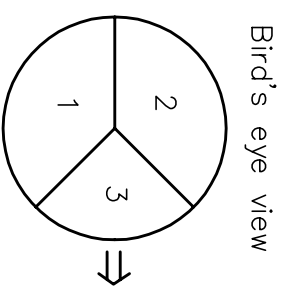
RECOMMENDED LOCATION  
OF TRANSDUCER



SECTION A-A



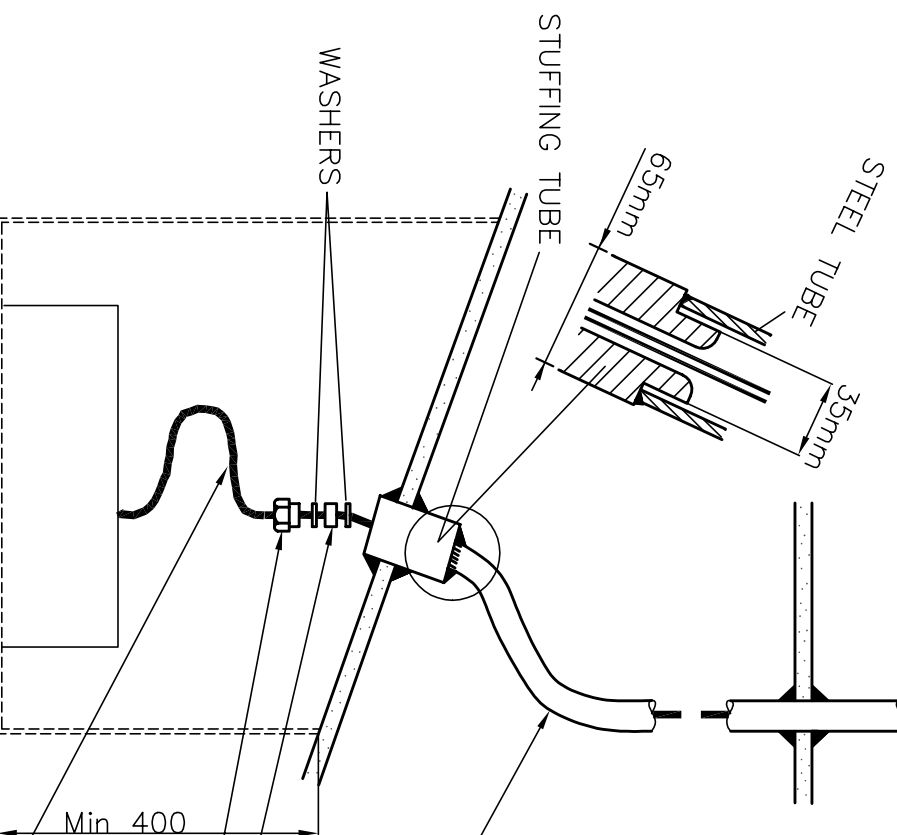
NB: DO NOT LIFT THE  
TRANSDUCER BY IT'S CABLE.



Antifouling paints contain solvent which  
can attack the polyurethane face of  
the transducer.

Approved antifouling paints are listed in  
SIMRAD INSTALLATION MANUAL 851-160164

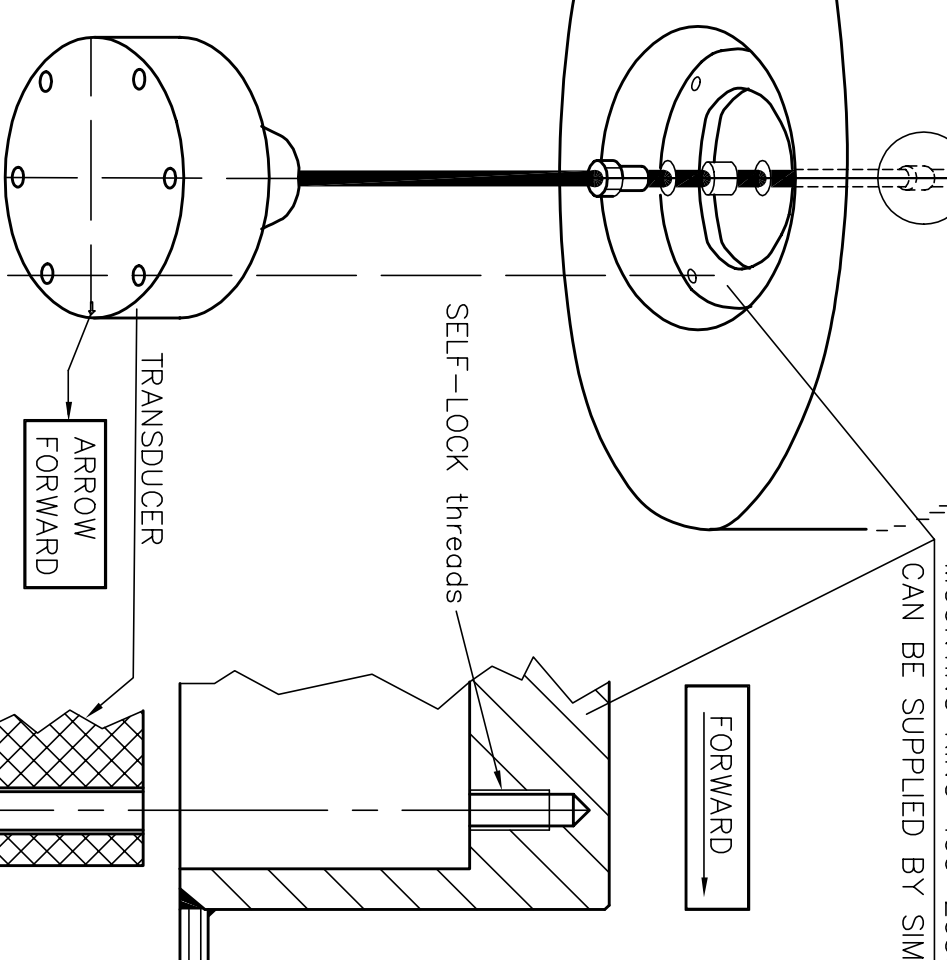
STEEL TUBE, MIN. 35mm INSIDE DIAM.  
WALL THICKNESS MIN. 6mm (IF GALVANIZED 4.5mm)  
SIMRAD RECOMMENDS TUBING THE TRANSDUCER CABLE  
BETWEEN THE SOUNDER AND TRANSDUCER TO MINIMIZE  
ELECTRICAL INTERFERENCE.



AIR OUTLET

STEEL BLISTER, TO BE MADE BY SHIPYARD.  
SIMRAD DWG. NO. 830-203430

MOUNTING RING 499-203336  
CAN BE SUPPLIED BY SIMRAD.



WASHER  
BOLT M10x100  
TIGHTENING TORQUE  
31 Nm (3.16 kpm)

REV./SIGN.	B	OMJ							
DATE	00.06.16								
PROJ. METHOD									
SCALE	-								
DRAWN	00.02.02	TW							
CHECKED	00.02.25	KTP							
APPROVED	00.03.15	OMJ							
UNLESS OTHERWISE STATED, TOLERANCE: DIM.: THREAD:			MOUNTING ARRANGEMENT OF TRANSDUCER IN STEEL BLISTER TRANSDUCER						
PARTS LIST:			<b>SIMRAD</b> A KONGSBERG Company SHEET 1 OF 1 SH.SIZE: A3 REV.: <b>820-203428</b> B						
FILE NO.: 692-48									