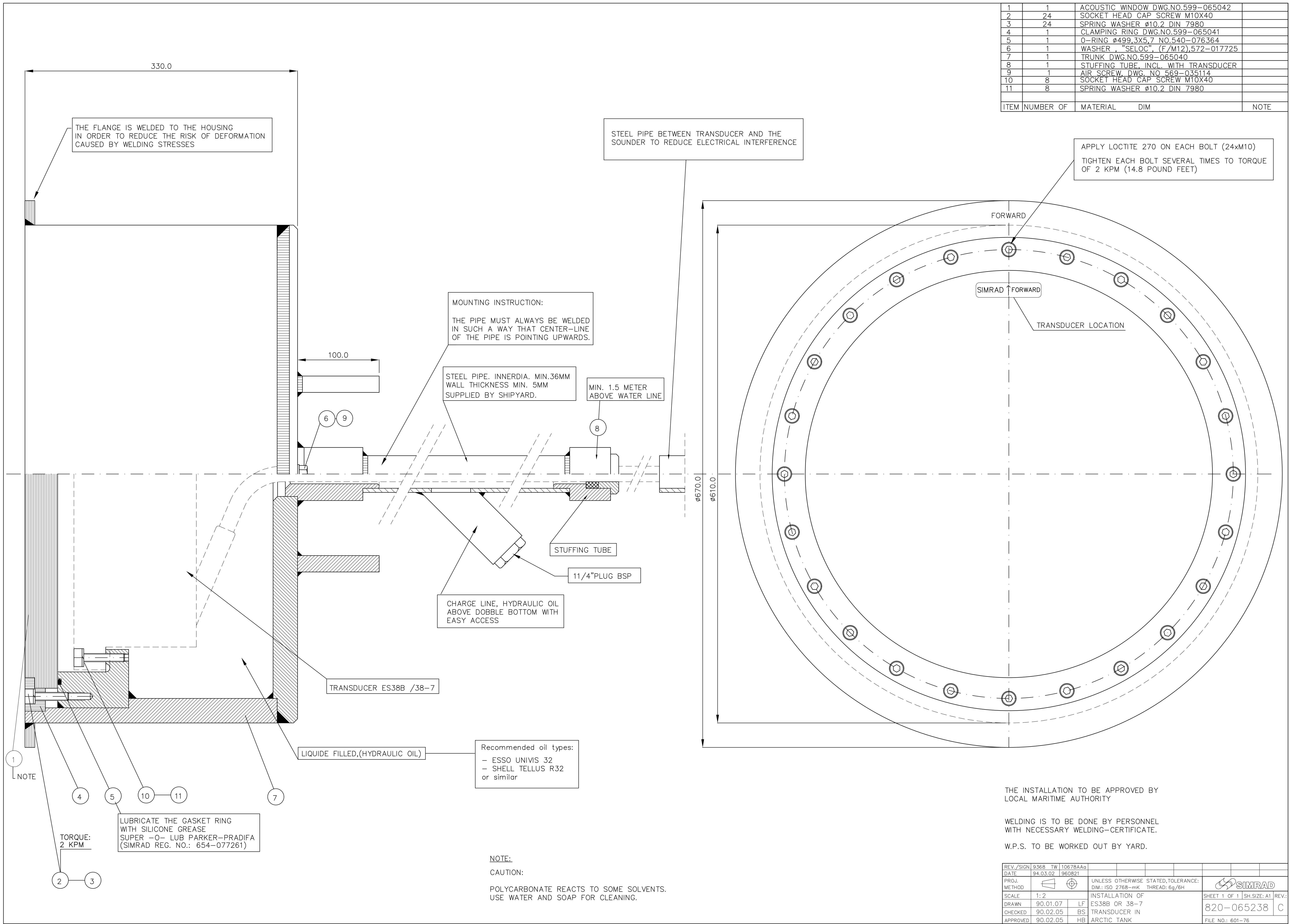


1	1	ACOUSTIC WINDOW DWG.NO.599-065042		
2	24	SOCKET HEAD CAP SCREW M10X40		
3	24	SPRING WASHER Ø10.2 DIN 7980		
4	1	CLAMPING RING DWG.NO.599-065041		
5	1	O-RING Ø499.3X5.7 NO.540-076364		
6	1	WASHER, "SELOC", (F/M12),572-017725		
7	1	TRUNK DWG.NO.599-065040		
8	1	STUFFING TUBE, INCL. WITH TRANSDUCER		
9	1	AIR SCREW, DWG. NO. 569-035114		
10	8	SOCKET HEAD CAP SCREW M10X40		
11	8	SPRING WASHER Ø10.2 DIN 7980		
ITEM	NUMBER OF	MATERIAL	DIM	NOTE



THE FLANGE IS WELDED TO THE HOUSING IN ORDER TO REDUCE THE RISK OF DEFORMATION CAUSED BY WELDING STRESSES

STEEL PIPE BETWEEN TRANSDUCER AND THE SOUNDER TO REDUCE ELECTRICAL INTERFERENCE

APPLY LOCTITE 270 ON EACH BOLT (24xM10)  
TIGHTEN EACH BOLT SEVERAL TIMES TO TORQUE OF 2 KPM (14.8 POUND FEET)

MOUNTING INSTRUCTION:  
THE PIPE MUST ALWAYS BE WELDED IN SUCH A WAY THAT CENTER-LINE OF THE PIPE IS POINTING UPWARDS.

STEEL PIPE, INNERDIA. MIN.36MM  
WALL THICKNESS MIN. 5MM  
SUPPLIED BY SHIPYARD.

MIN. 1.5 METER  
ABOVE WATER LINE

CHARGE LINE, HYDRAULIC OIL  
ABOVE DOBBLE BOTTOM WITH  
EASY ACCESS

Recommended oil types:  
- ESSO UNIVIS 32  
- SHELL TELLUS R32  
or similar

LUBRICATE THE GASKET RING  
WITH SILICONE GREASE  
SUPER -0- LUB PARKER-PRADIFA  
(SIMRAD REG. NO.: 654-077261)

NOTE:  
CAUTION:  
POLYCARBONATE REACTS TO SOME SOLVENTS.  
USE WATER AND SOAP FOR CLEANING.

THE INSTALLATION TO BE APPROVED BY  
LOCAL MARITIME AUTHORITY

WELDING IS TO BE DONE BY PERSONNEL  
WITH NECESSARY WELDING-CERTIFICATE.

W.P.S. TO BE WORKED OUT BY YARD.

REV./SIGN	9368	TW	10678AAc							
DATE	94.03.02		960821							
PROJ. METHOD				UNLESS OTHERWISE STATED, TOLERANCE:						
SCALE	1:2			DIM.: ISO 2768-mK	THREAD: 6g/6h					
DRAWN	90.01.07	LF	ES38B OR 38-7	INSTALLATION OF						
CHECKED	90.02.05	BS	TRANSUCER IN							
APPROVED	90.02.05	HB	ARCTIC TANK							
								SHEET 1 OF 1	SH. SIZE: A1	REV.:
								820-065238		C
								FILE NO.: 601-76		