

Software release note

Simrad ME70 Scientific multibeam echo sounder

Software version

This document describes changes introduced with the following Simrad ME70 software version:

- ME70 SW 1.2.7.

Hardware configuration

The new software version is only valid for single computer ME70 installations.

Software changes

Support for new controller in the Power Supply Units

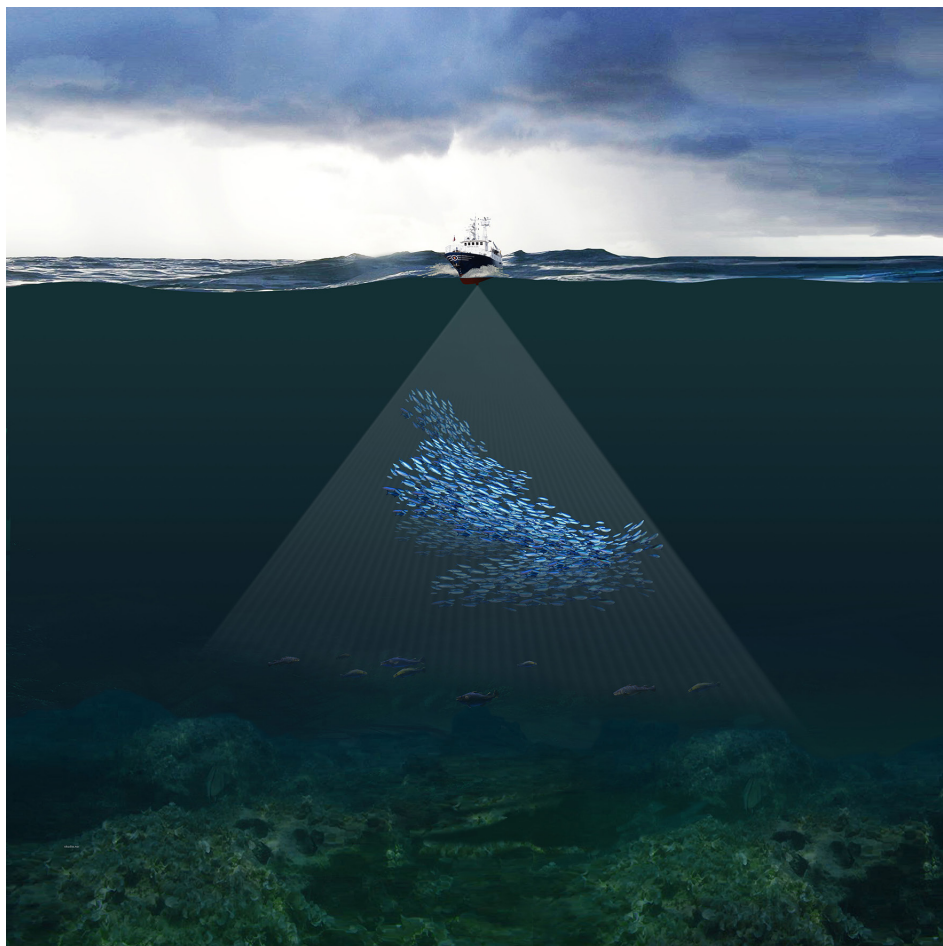
A software change has been made to support the new type of internet power switch. The software change is backwards compatible, and will also work with all existing switches.

End user manuals

The ME70 Reference manual, Operator manual and On-line help have not been updated. The manuals can be downloaded from www.simrad.com.

Remember that the reference and installation manuals are also available as separate websites on the following URLs:

- http://www.simrad.net/me70_ref_english/default.htm
- http://www.simrad.net/me70_ins_english/default.htm



Software availability

The operational software for the ME70 can be downloaded from the Simrad website using the log-in credentials offered to the individual ME70 customers.

The software can also be ordered on a relevant media using the following part number:

ME70 Processor Unit SW: **308940**

Software installation instructions

Software installation is made using a dedicated wizard.

Simrad

Kongsberg Maritime AS
Strandpromenaden 50
P.O.Box 111
N-3191 Horten, Norway

Telephone: +47 33 03 40 00
Telefax: +47 33 04 29 87
www.simrad.com
simrad.sales@simrad.com

SIMRAD