

# Software release note

## Simrad PI Configurator SW 4.32

### Introduction

This document describes the release of software version **4.32** for the **PI Configurator** application.

The **PI Configurator** runs on a standard desktop or laptop computer set up with **Windows® XP®** or **Windows® 7** operating systems. The application is used to define transmission channels and update rates on the PI and PS sensors.

In order to interface the sensor, you need a special interface unit, the **PI CIC**. This interface device can be obtained from Simrad.

### Changes with SW 4.32

The following changes have been implemented.

- Core software redesigned.
- Implemented support for new sensors.
- Released for Windows® 7.
- Bug fixes.

### PI CIC software driver

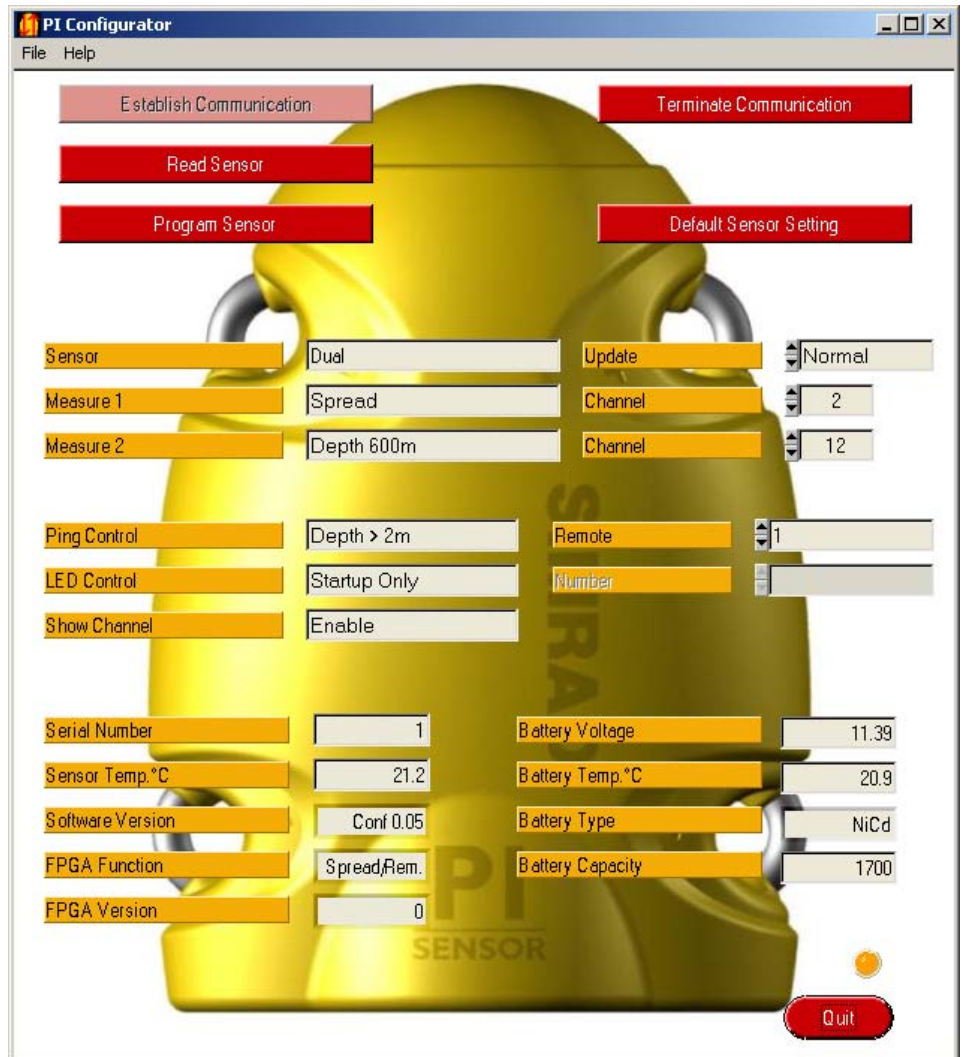
A dedicated driver must be installed on your computer to use the **PI CIC** interface unit. This driver can be downloaded from our website:

<http://www.simrad.com/pic>.

A new driver version 2.06.02 is available to support Windows® 7.

### Do I need to upgrade?

This new version of the **PI Configurator** software will - when used with the **PI CIC** interface unit - handle all old and current PI and PS sensors. The latest hardware and software developments put to



use in the sensors will also require this combination. Older versions of the **PI Configurator** will not work on the latest sensors. The old types of interface cables will also prove unoperational on the latest sensor electronics.

For these reasons, we strongly advise all users to upgrade to the latest software version, and to put the **PI CIC** unit to use.

### Documentation

The **PI Configurator** instruction manual and on-line help has been revised. The manuals are now also available in Spanish.

*Turn the page for more information!*

## How to install the new SW

The new software version is distributed on an ISO file. In order to install the software, observe the following procedure:

1. Download the ISO to your own harddisk.
2. Burn the ISO on a CD using the “burn image to disk” feature (or equivalent)
3. If you have an old version of the PI Configurator on your computer, remove it.
4. Close all applications on your computer.
5. Insert the CD.
6. Locate the **setup.exe** file.
7. Double-click the **setup.exe** file to start the installation.
8. Observe the instructions provided by the installation program.

If you have an old version of the **PI Configurator** utility the installation program will not remove it. You must therefore remove the old installation manually before you install the new.

## How to obtain the software

The new software version can be downloaded from our website:

<http://www.simrad.com/pic>

ISO and ZIP formats are available.

It is also possible to order a CD from us. A small fee will then be charged for handling and postage.

## Order numbers

Observe the following order numbers.

- PI Configurator CD: 882-208829
- PI CIC: 326157